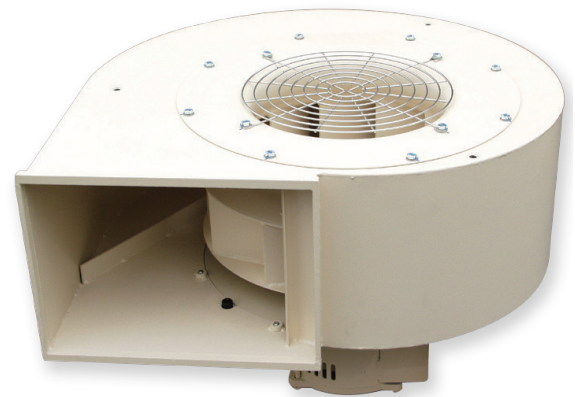


TRACTION MOTOR BLOWERS

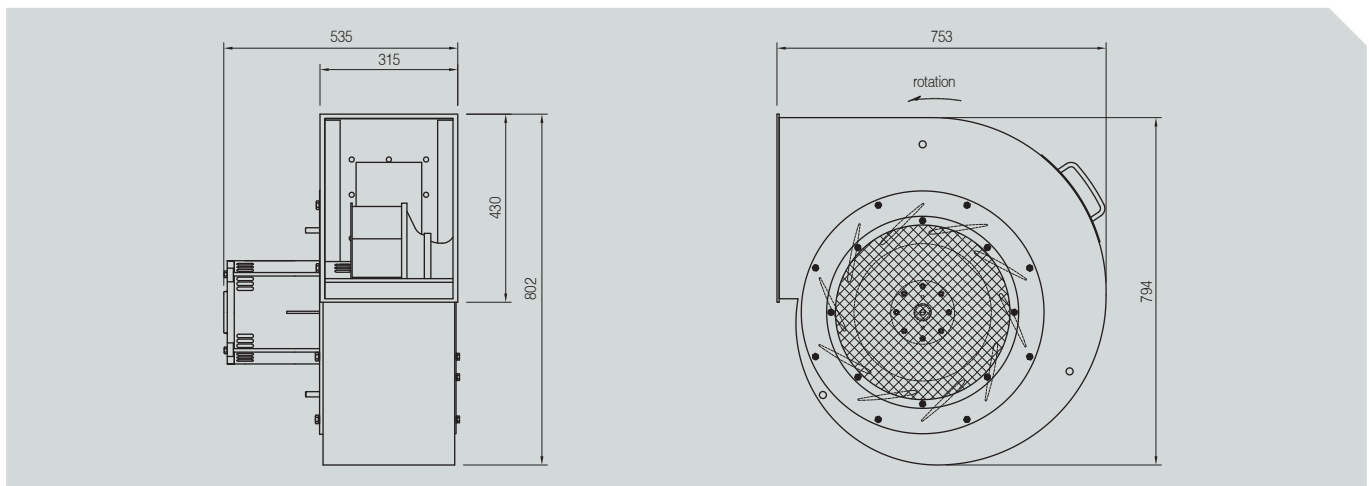
Characteristics

- Used for cooling high-voltage transformers, especially in high-speed trains for rail traction motor
- Due to design of airfoil structures, high efficiency with low level of noise ensured relative to electric power
- With light-weight aluminium, structural strength enhanced and speed control freely possible in accordance to frequency rate of change



MODEL	Motor power		Static Pressure		Air Volume
	kw	HP	Pa	mmAq	m³/min
KJ-T-TM	13	17	3234	330	235

• KJ-T-TM



Power source			Static Pressure	Air Volume	Motor power	Input power	Current	Rotative speed
Phase	V	Hz	Pa	CMM	W	W	A	RPM
∅ 3	380	50Hz	3234	235	13000	14500	24	3480

