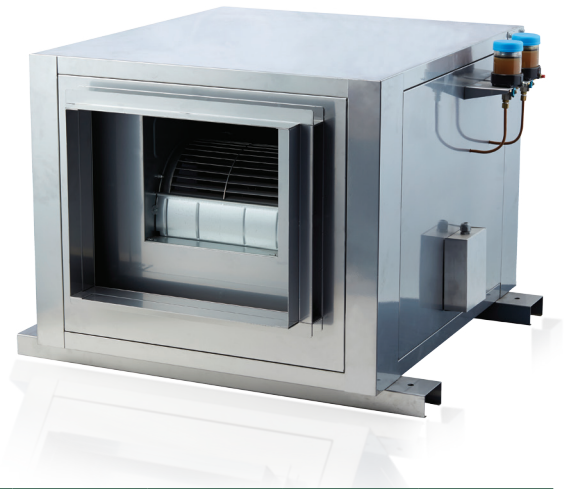


# POWER VENTILATOR

## Characteristics

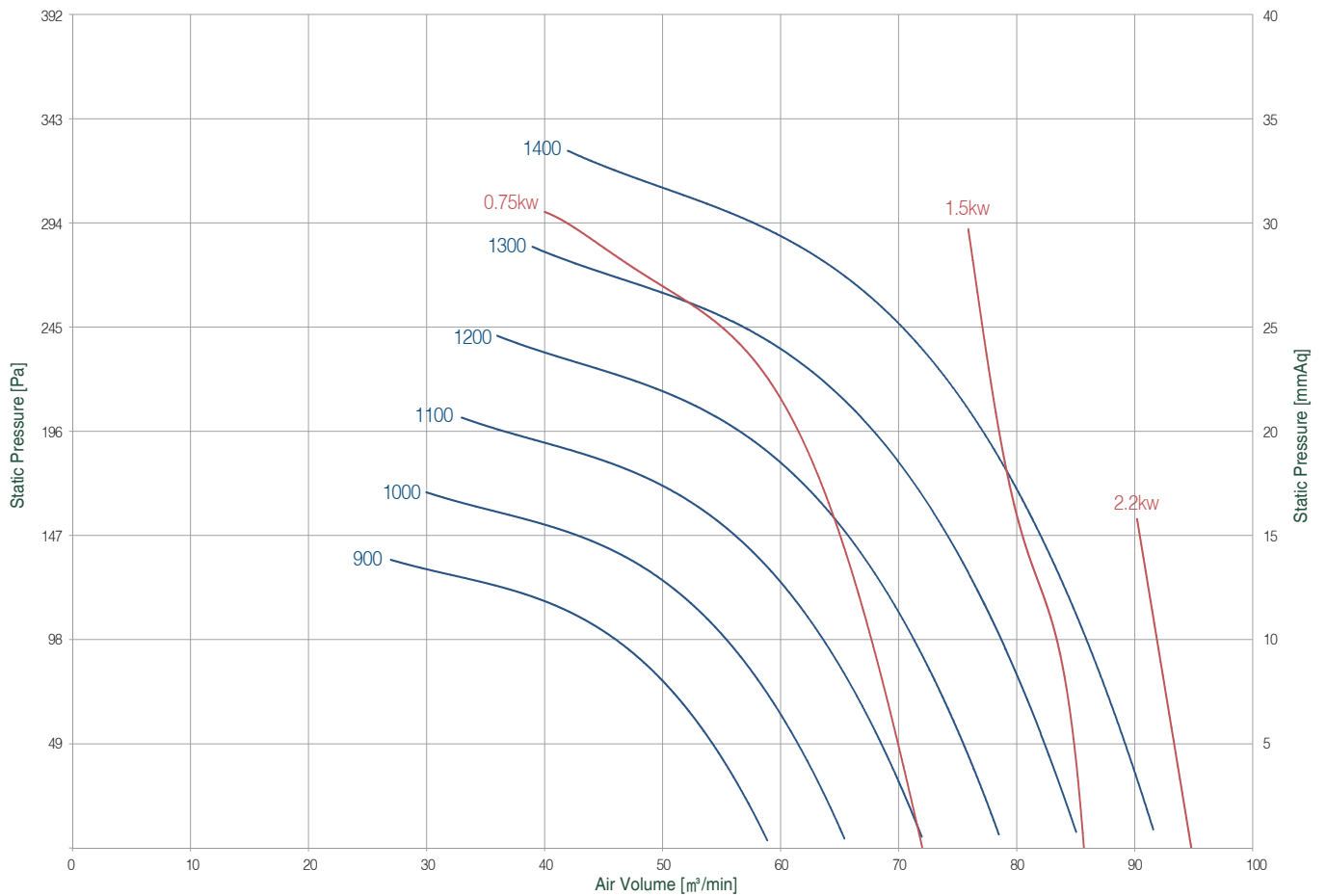
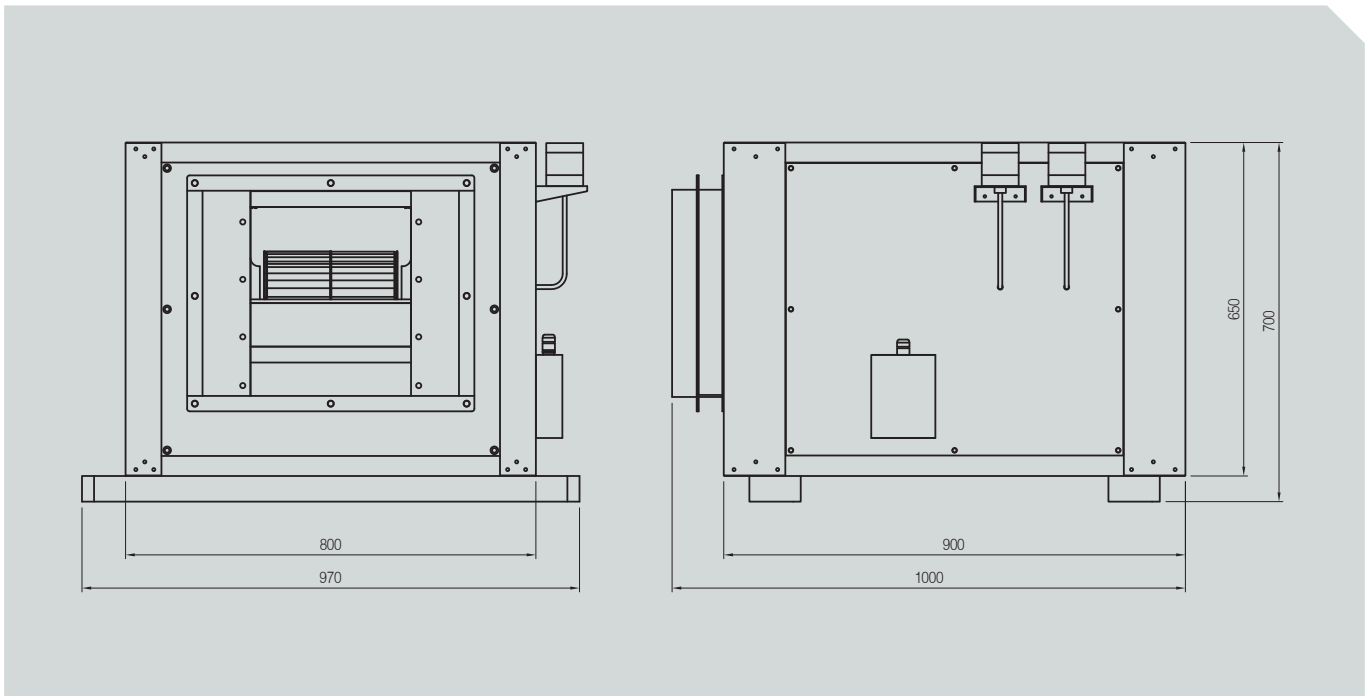
- High air volume per unit area generated
- Wider range of usages with adoption of the fan using a pully belt-driven application
- Repair and maintenance cost reduced with implementation of self-aligning bearings and automatic lubrication system
- Options available to select flange for intake and exhaust and damper
- Explosion-proof and totally enclosed high-efficiency motors installed in accordance with NEMA(National Electrical Manufacturers Association) requirements



## Product data

Rotative speed		Static Pressure							
		98 Pa	10 mmAq	196 Pa	20 mmAq	294 Pa	30 mmAq	392 Pa	40 mmAq
900	Air Volume	m <sup>3</sup> /min							
	MOTOR	HP							
1000	Air Volume	m <sup>3</sup> /min							
	MOTOR	HP							
1100	Air Volume	m <sup>3</sup> /min							
	MOTOR	HP							
1200	Air Volume	m <sup>3</sup> /min							
	MOTOR	HP							
1300	Air Volume	m <sup>3</sup> /min							
	MOTOR	HP							
1400	Air Volume	m <sup>3</sup> /min							
	MOTOR	HP							

• POWER VENTILATOR



POWER VENTILATOR