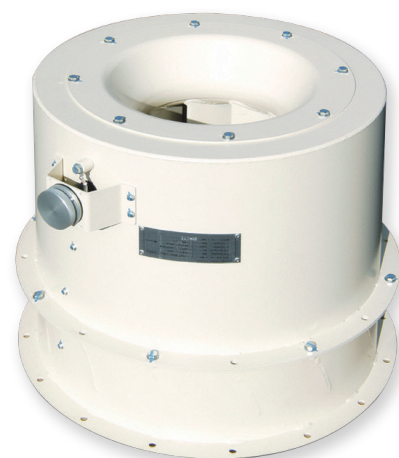


MOTOR BLOCK BLOWERS

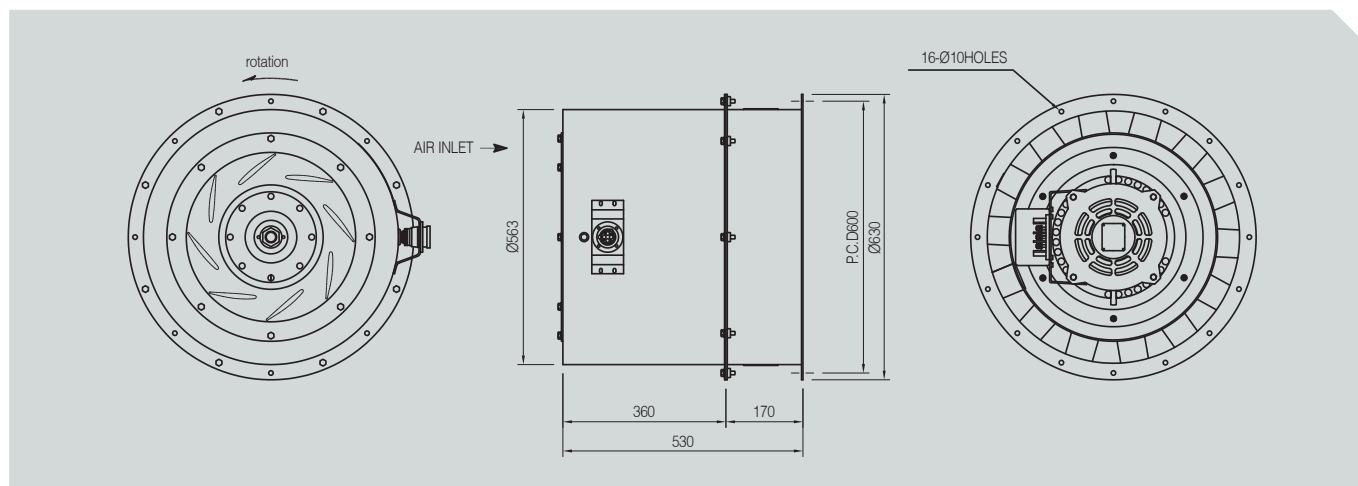
Characteristics

- Used for frequency conversion
- High efficiency achieved relative to power generated
- Features of centrifugal fan used as axial blower format
- Relative to air flow, level of noise lowered



MODEL	Motor power		Static Pressure		Air Volume
	kw	HP	Pa	mmAq	m ³ /min
KJ-T-MB	5	7	2156	220	146

• KJ-T-MB



Power source			Static Pressure	Air Volume	Motor power	Input power	Current	Rotative speed
Phase	V	Hz						
∅ 3	380	60Hz	2156	146	5000	5700	10	3500

